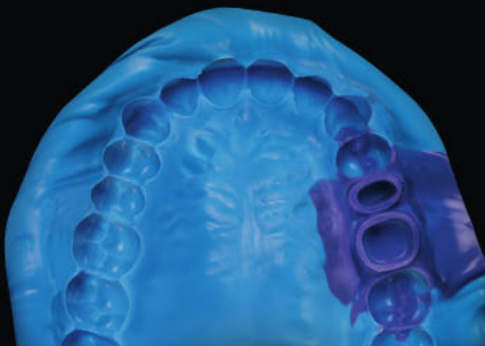


Identium® Heavy



Here used in combination with Identium® Light in the double mix impression technique

Identium® – the best of two worlds.

Identium® Heavy is a high viscosity, addition-curing elastomeric impression material based on Vinylsiloxanether®.

Identium® Heavy has been specially developed for the one-step impression technique and combines the best of two worlds: all the advantages of polyether materials coupled with those of A-silicones.

The highly elastic properties of Identium® Heavy ensure dimensionally accurate recovery and very easy removal. Identium® Heavy is also odorless and has a neutral taste.

Based on the entirely new material of Vinylsiloxanether®, Identium® Heavy provides the following benefits:

- Excellent flowability combined with exceptional hydrophilicity (lowest achievable contact angle of less than 10° after 1 second), ensuring optimal flow behavior in a moist environment.

Vinylsiloxanether® (VSXE)
Precision impression material

SUGGESTED IMPRESSION TECHNIQUE

One-step impression technique
(simultaneous technique)

INDICATIONS

Functional impressions

Implant impressions

Impressions for crowns/bridges/inlays/
onlays and veneer preparations

Impressions about full or partial denture

■ highly recommended
■ recommended

| | | Fast-Set | Regular-Set |
|--------------|--|-----------|-------------|
| Intro pack | 362 ml + 50 ml | REF 28238 | REF 28237 |
| | 1 x 300 ml base, 1 x 62 ml catalyst, 10 dynamic mixers, 1 cartridge body, 1 x 50 ml Light body, 6 mixing tips, 6 intraoral tips, 10 ml adhesive | | |
| Refill pack | 724 ml | REF 13786 | REF 13776 |
| | 2 x 300 ml base, 2 x 62 ml catalyst | | |
| Economy pack | 2172 ml | REF 13787 | REF 13777 |
| | 6 x 300 ml base, 6 x 62 ml catalyst | | |



Precision impression material (Vinylsiloxanether®)

The Identium® Heavy Advantages and Benefits

Product Advantages

- Excellent flowability
- Exceptional hydrophilicity
- Optimal elastomeric properties
- Balanced setting behavior
- Odorless and neutral taste
- Accurate model fabrication
- Easy handling

Benefits to the Practitioner

- Excellent flowability with high positional stability, constantly guaranteed throughout the entire working time.
- Optimal flow behavior in a moist environment, lowest achievable contact angle (less than 10° after 1 second!).
- Dimensionally accurate recovery and easy removal from the patient's mouth.
- Long working time with short intraoral setting time (double-snap effect).
- More comfortable for the patient: no gag reflex, no erratic movement.
- Minimum risk of fracture when removing the impression.
- In the practical Plug & Press® system; compatible with commercially available disinfectants (no swelling), can be poured immediately.

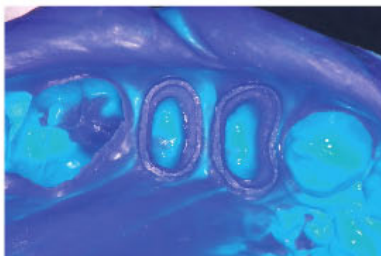
Contact angle measurement

Identium® Heavy is a high viscosity impression material with high final hardness available in foil bags. It is particularly suitable for the double mix technique (in combination with low viscosity Identium® Light), for taking impressions for the fabrication of crowns/bridges, inlays/onlays and veneers, for functional and implant impressions as well as impressions for removable restorations.



Identium® after 1 sec.: contact angle < 10°

Clinical case with Identium® Heavy



One step impression technique (simultaneous technique), Dr. Ercole Parmenzini (Padua, Italy).

Technical Data

| Product name | Mixing ratio | Working time at 23° C/ 74° F ≤ | Working time at 35° C/ 95° F ≤ | Intraoral setting time at 35° C/ 95° F ≥ | Total setting time* ≥ | Hardness (approx.) Shore | Linear dimensional change (max.) % | Elastic Recovery test (approx.) % | Strain in compression (approx.) % |
|----------------------|--------------|--------------------------------|--------------------------------|--|-----------------------|--------------------------|------------------------------------|-----------------------------------|-----------------------------------|
| Identium® Heavy | 5:1 | 2 minutes | 80 seconds | 3 minutes 30 seconds | 5 minutes 30 seconds | A 60 | - 0.20 | 99.0 | 2.8 |
| Identium® Heavy fast | 5:1 | 1 minute 15 seconds | 40 seconds | 2 minutes 15 seconds | 3 minutes 30 seconds | A 60 | - 0.20 | 99.0 | 2.8 |

| Product name | ISO 4823 | Consistency (approx.) mm | Mixing ratio and total content volume per unit | Mixing technique | Mixing element | Color | Odor/taste |
|---|-------------------------|--------------------------|--|--|----------------|------------|------------|
| Identium® Heavy Identium® Heavy fast | Type 1, heavy-bodied | 32 | 5:1, 362 ml foil bag | Sympress or other automatic mixing and dispensing unit | Dynamic mixer | Light blue | Neutral |

* Total setting time (removal from the mouth) from the start of mixing.