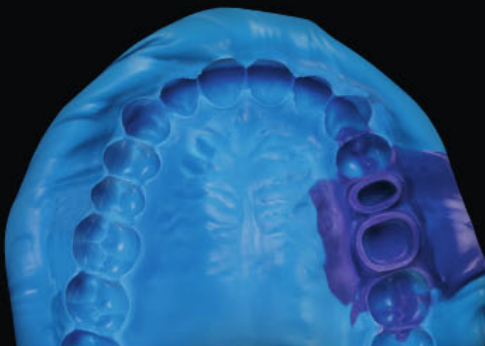


# Identium® Light



Here used in combination with Identium® Heavy in the double mix impression technique

## Identium® – the best of two worlds.

Identium® Light is a low viscosity, addition-curing elastomeric impression material based on Vinylsiloxanether®.

Identium® Light has been specially developed for the one-step impression technique and combines the best of two worlds: all the advantages of polyether materials coupled with those of A-silicones.

The highly elastic properties of Identium® Light ensure dimensionally accurate recovery and very easy removal. Identium® Light is also odorless and has a neutral taste.

Based on the entirely new material of Vinylsiloxanether®, Identium® Light provides the following benefits:

- Excellent flowability combined with exceptional hydrophilicity (lowest achievable contact angle of less than 10° after 1 second), ensuring optimal flow behavior in a moist environment, even in the narrowest sulcus crevices.

Vinylsiloxanether® (VSXE)  
Precision impression material

### SUGGESTED IMPRESSION TECHNIQUE

One-step impression technique (simultaneous technique)\*

### INDICATIONS

Implant impressions

Impressions for crowns/bridges/inlays/onlays and veneer preparations

Impressions about full or partial denture

■ highly recommended  
■ recommended

\*In combination with Identium® Heavy



Normal pack

100 ml

Fast-Set

REF 13711

Regular-Set

REF 13701

2 x 50 ml cartridge, 12 mixing tips, 12 intraoral tips

Current prices are available from our distributors. Not all products/packages are available in all markets.

## Precision impression material (Vinylsiloxanether®)

# The Identium® Light Advantages and Benefits

### Product Advantages

- Excellent flowability
- Exceptional hydrophilicity
- Optimal elastomeric properties
- Balanced setting behavior
- Odorless and neutral taste
- Accurate model fabrication
- Easy handling

### Benefits to the Practitioner

- Material flows into the narrowest sulcus crevices with high positional stability, constantly guaranteed throughout the entire working time.
- Optimal flow behavior in a moist environment, lowest achievable contact angle (less than 10° after 1 second!).
- Dimensionally accurate recovery and easy removal from the patient's mouth.
- Long working time with short intraoral setting time (double-snap effect).
- More comfortable for the patient: no gag reflex, no erratic movement.
- Minimum risk of fracture when removing the impression.
- Compatible with commercially available disinfectants (no swelling), can be poured immediately.

### Contact angle measurement

Identium® Light is a low viscosity impression material available in the 1:1 cartridge. It is particularly suitable for the double mix impression technique (in combination with high viscosity Identium® Heavy), for taking impressions for the fabrication of crowns/bridges, inlays/onlays and veneers, for reline impressions as well as impressions for removable restorations.



Identium® after 1 sec.: contact angle < 10°

### Clinical case with Identium® Light



Identium® Light is applied around the preparation, Dr. Ercole Parnanzini (Padua, Italy).

## Technical Data

Product name	Mixing ratio	Working time at 23° C/ 74° F ≤	Working time at 35° C/ 95° F ≤	Intraoral setting time at 35° C/ 95° F ≥	Total setting time* ≥	Hardness (approx.) Shore	Linear dimensional change (max.) %	Elastic Recovery test (approx.) %	Strain in compression (approx.) %
Identium® Light	1:1	2 minutes	80 seconds	3 minutes 30 seconds	5 minutes 30 seconds	A 46	-0.20	99.0	3.8
Identium® Light fast	1:1	1 minute 15 seconds	40 seconds	2 minutes 15 seconds	3 minutes 30 seconds	A 46	-0.20	99.0	3.8

Product name	ISO 4823	Consistency (approx.) mm	Mixing ratio and total content volume per unit	Mixing technique	Mixing element	Color	Odor/taste
Identium® Light	Type 3,	42	1:1, 50 ml cartridge	Applyfix® 4 dispensing gun DS-50 1:1/2:1	Yellow mixing tip MB Ø 4.2 mm	Purple	Neutral
Identium® Light fast	light-bodied						

\* Total setting time (removal from the mouth) from the start of mixing.