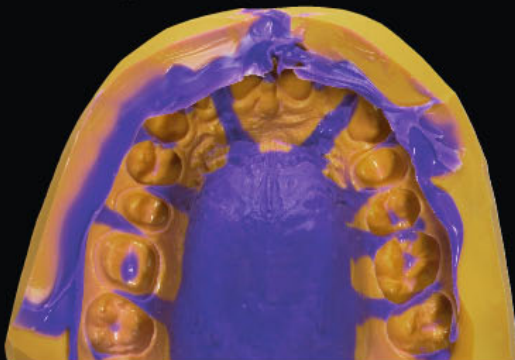


Panasil® putty fast set



Here used in combination with Panasil® contact plus x-light in the two-step impression technique

Lasting success

Kneadable, addition-curing, elastomeric precision preliminary impression material based on vinyl polysiloxane. Quick setting.

Panasil® putty fast set is a modern classic. The highly efficient impression material guarantees maximum precision and optimal convenience thanks to an intraoral setting time of only 2 minutes.

- Panasil® putty fast set is ideal for use in combination with Panasil® contact plus x-light.



Vinyl polysiloxane (VPS) Precision impression material

SUGGESTED IMPRESSION TECHNIQUE

Two-step putty/wash technique

INDICATIONS

Impressions for crowns/bridges/inlays/onlays and veneer preparations

 highly recommended
 recommended

Intro pack	400 ml	REF 11140
1 x 200 ml base, 1 x 200 ml catalyst, 2 measuring scoops		
Normal pack	900 ml	REF 11141
1 x 450 ml base, 1 x 450 ml catalyst, 2 measuring scoops		
Economy pack	3600 ml	REF 11143
4 x 450 ml base, 4 x 450 ml catalyst, 2 measuring scoops		

Current prices are available from our distributors. Not all products/packages are available in all markets.



Precision preliminary impression material (vinyl polysiloxane)

The Panasil® putty fast set Advantages and Benefits

Product Advantages

- Short intraoral setting time of only 2 minutes with a total working time of 1 minute 30 seconds
- Good elastic properties
- Non-sticky
- Pliable consistency

Benefits to the Practitioner

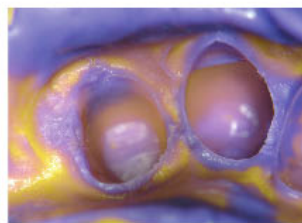
- Efficient impression-taking, patient-friendly, quick final set
- Easy removal from the patient's mouth
- Easy handling
- Good control of the wash material; easy to knead



Cut-back primary impression. All undercuts and interdental septa were fully removed, adequate escape channels were prepared to avoid the wash material displacing the primary impression material.



Syringing the prepared teeth with low viscosity Panasil® initial contact x-light. This material flows into the infragingival region excellently, even with residual moisture. The tooth surfaces were immediately and permanently wetted.



Completed two-step impression. The wash material was compressed to a very thin film. The impression accurately reproduces the preparation details.

Pictures: Dr. Manuela Heuendorf

Technical Data

Product name	Mixing ratio	Working time at 23° C/ 74° F ≤	Working time at 35° C/ 95° F ≤	Intraoral setting time at 35° C/95° F ≥	Total setting time* ≥	Hardness (approx.) Shore	Linear dimensional change (max.) %	Elastic Recovery test (approx.) %	Strain in compression (approx.) %
Panasil® putty fast set	1:1	1 minute 30 seconds	N/a	2 minutes	3 minutes 30 seconds	A 66	- 0.20	99.0	2.7

Product name	ISO 4823	Consistency (approx.) mm	Mixing ratio and total content volume per unit	Mixing technique	Mixing element	Color	Odor/taste
Panasil® putty fast set	Type 0, putty	24	1:1, 400/900 ml in jars	Manual, 1 measuring scoop (12.3 ml) per component (base and hardener)	Manual	Yellow ochre	Neutral

* Total setting time (removal from the mouth) from the start of mixing.